



LH 10

Fully Auto HbA1c Analyser



DR NTR BIOSCIENCES PVT. LTD

www.drntrbiosciences.com



LH 10 HbA1c Analyzer

Adopts classical principle of methodology—ion exchange liquid chromatography, it is the gold Standard of HbA1c analysis, and it is the only analysis method to really separate HbA1c directly by measuring the piecemeal absorbance through continuous on line, and obtain the correct area percentage with integration.

Original 4—gradient elution method (ZL 201110084781.3).

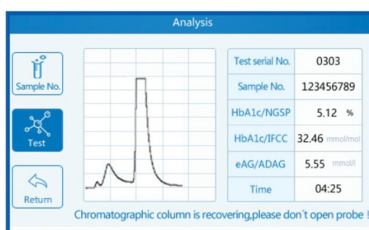
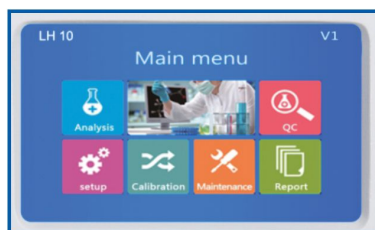
High sensitive 415nm LED integral photometer.

With gas dissolution and bubble elimination technology.

Supplied with original calibrator.

Unique thermostatic apparatus for chromatographic column.

HbA1c Analyzer (LH10) Chromatogram



- Original 4-gradient elution method
- High sensitive 415nm LED integral photometer.
- Unique thermostatic apparatus for chromatographic column
Supplied with original calibrator.
- With gas dissolution and air bubble removal technology.



Six major functional features



Real-time chromatogram, intelligent process monitoring.



Molded production, color touch screen, humanized man-machine exchange UI design.



Fully open structure, reasonable flow path, low fault, easy maintenance.



Equipped with a scanning gun interface, the user can configure the scanning gun according to the need, and the scanning sample information is uploaded to the LIS system together with measurement results.



Real-time quality control chart analysis control, visual performance and state of the instrument.



Samples can be checked by time, order and patient sample numbers.

Specifications

Model	AH10
Basic Parameters	
Testing Method	Chromatography / ion-exchange liquid chromatography
Testing Item	Glycated haemoglobin A1c (HbA1c)
Testing Scope	4.0% – 16.0%
Testing Parameters	Precision (CV) ≤ 3%
Testing Time	Print report within 4 minutes and 10 seconds after analysis
Sample Type	Venous blood (EDTA anticoagulation), Peripheral finger blood
Function Parameters	
Photometer	415nm LED Integral flow colorimeter
Sampling Mode	By manual
Calibration Mode	Two points calibration
Control Graph	Viewable / Printable
Thermostatic Control	Constant temperature for chromatographic column at about 25°C
Output Parameters	
Display	Colour touch display
Printer	Built-in 58mm thermal printer, printing testing curve and report
Report Output	IFCC concentration, NGSP area percentage, ADAG average glucose
Data Storage	1000 test reports (including testing curve)
Communication Interface	USB/RS232 communication interface, connecting to HIS/LIS/ Users can prepare the scanning gun
Working Parameters	
Power Supply	~ 220V ± 22V 50Hz ± 1Hz 215VA
Size	342mm x 217mm x 335mm
Weight	6.5Kg
Working Environment	Temperature: 10°C – 30°C, Relative humidity ≤ 70%

Please refer to the operation manual for the taboo contents or matters need attention.

AUTHORIZED DISTRIBUTOR